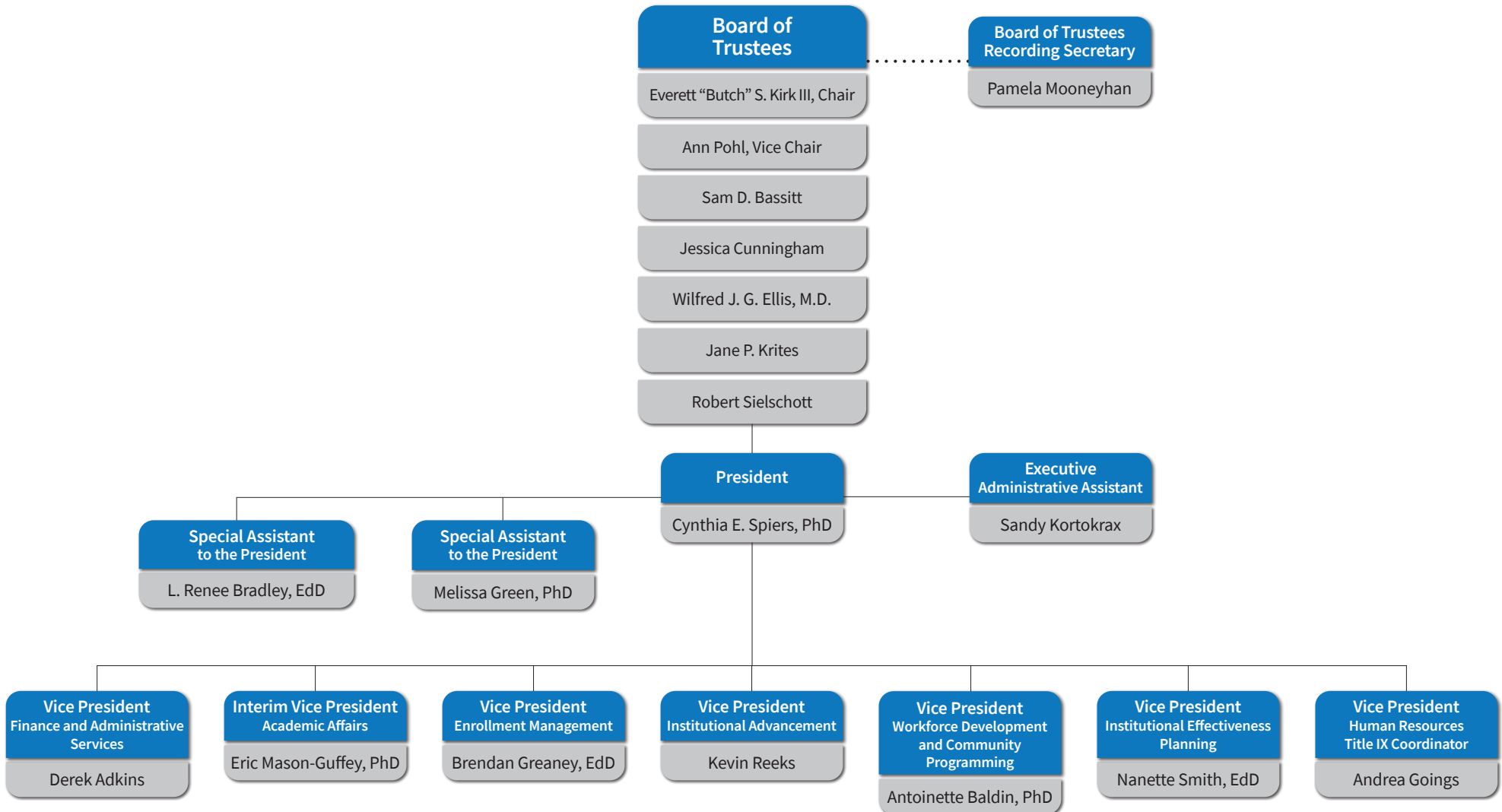
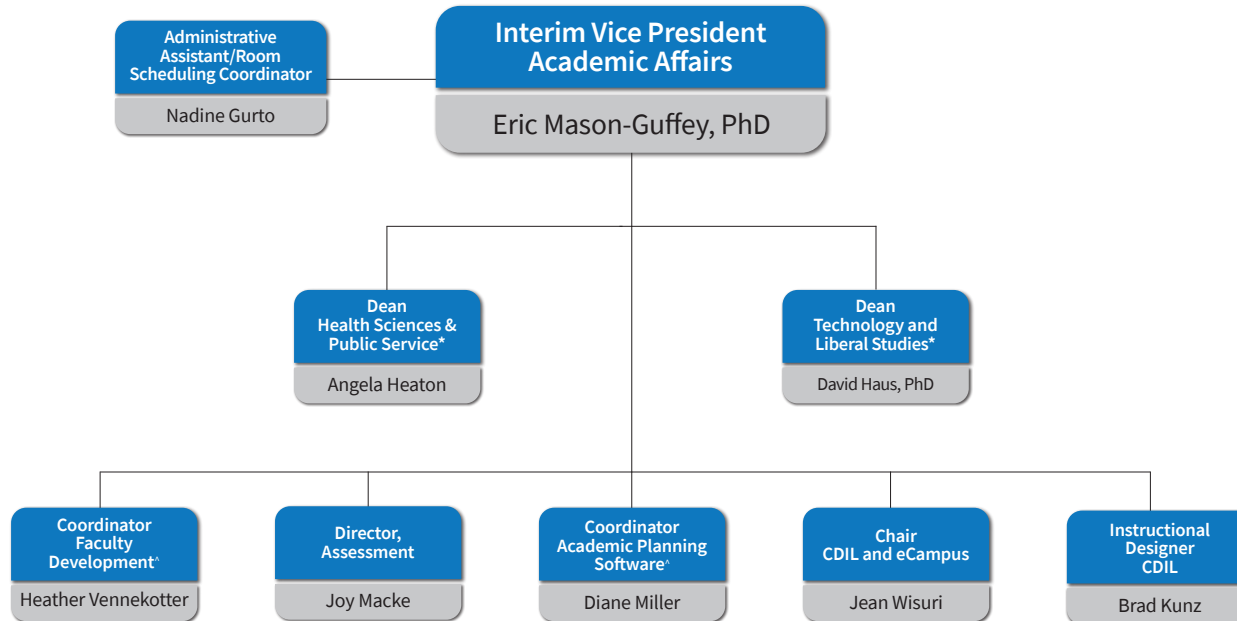


OFFICE OF THE PRESIDENT

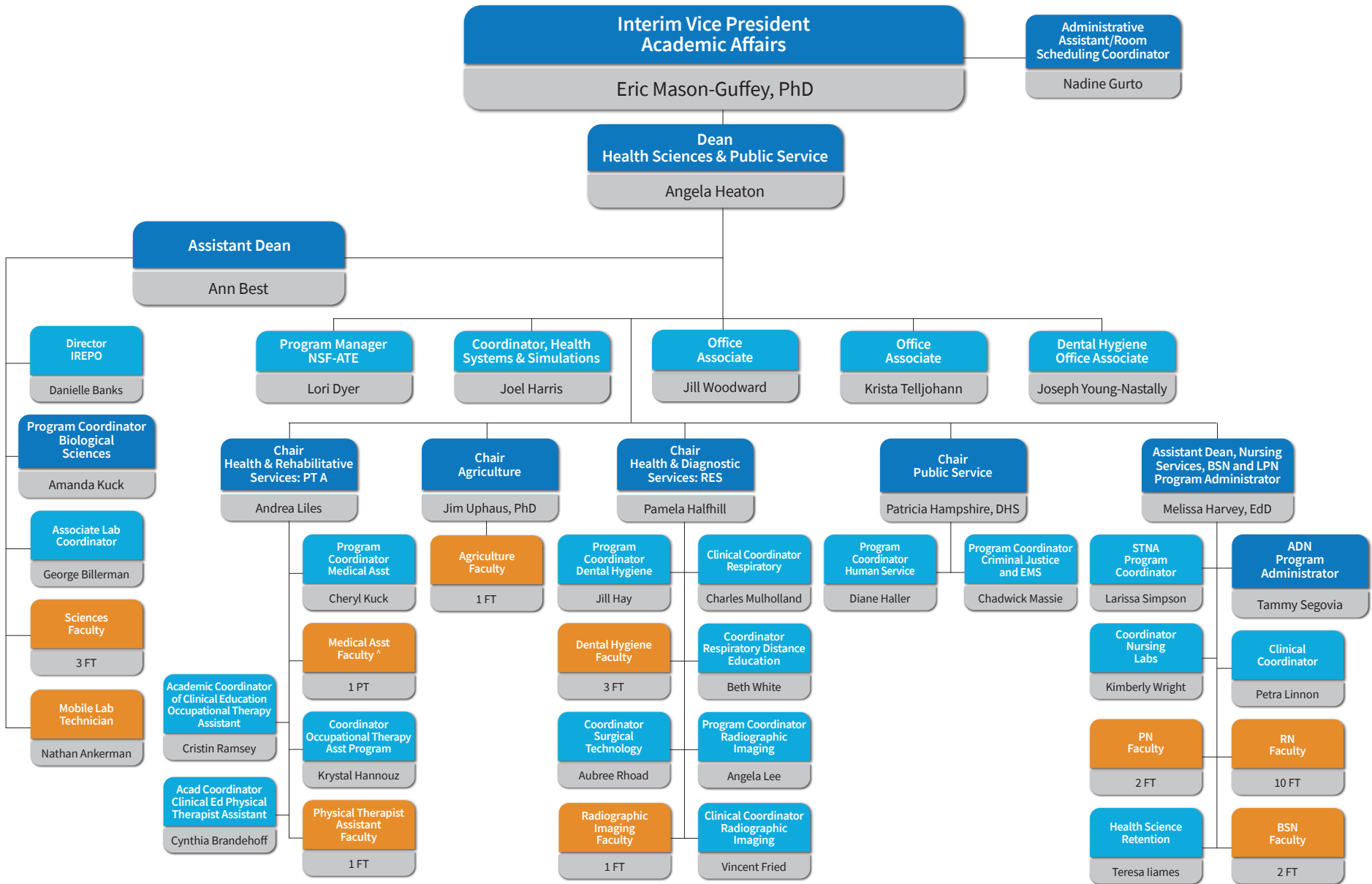




^ .5 FTE

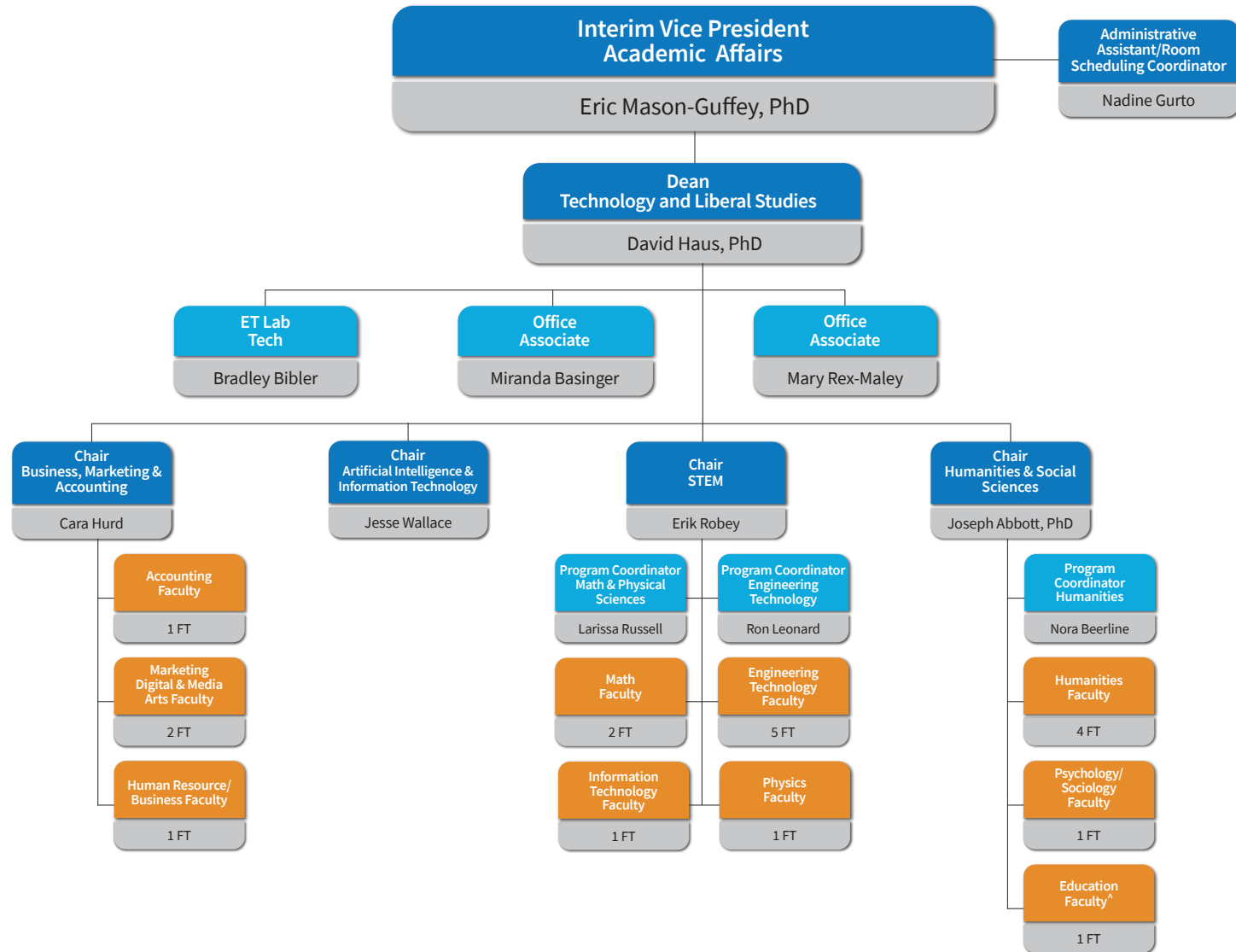
* See detailed
Division organizational chart

HEALTH SCIENCES AND PUBLIC SERVICE

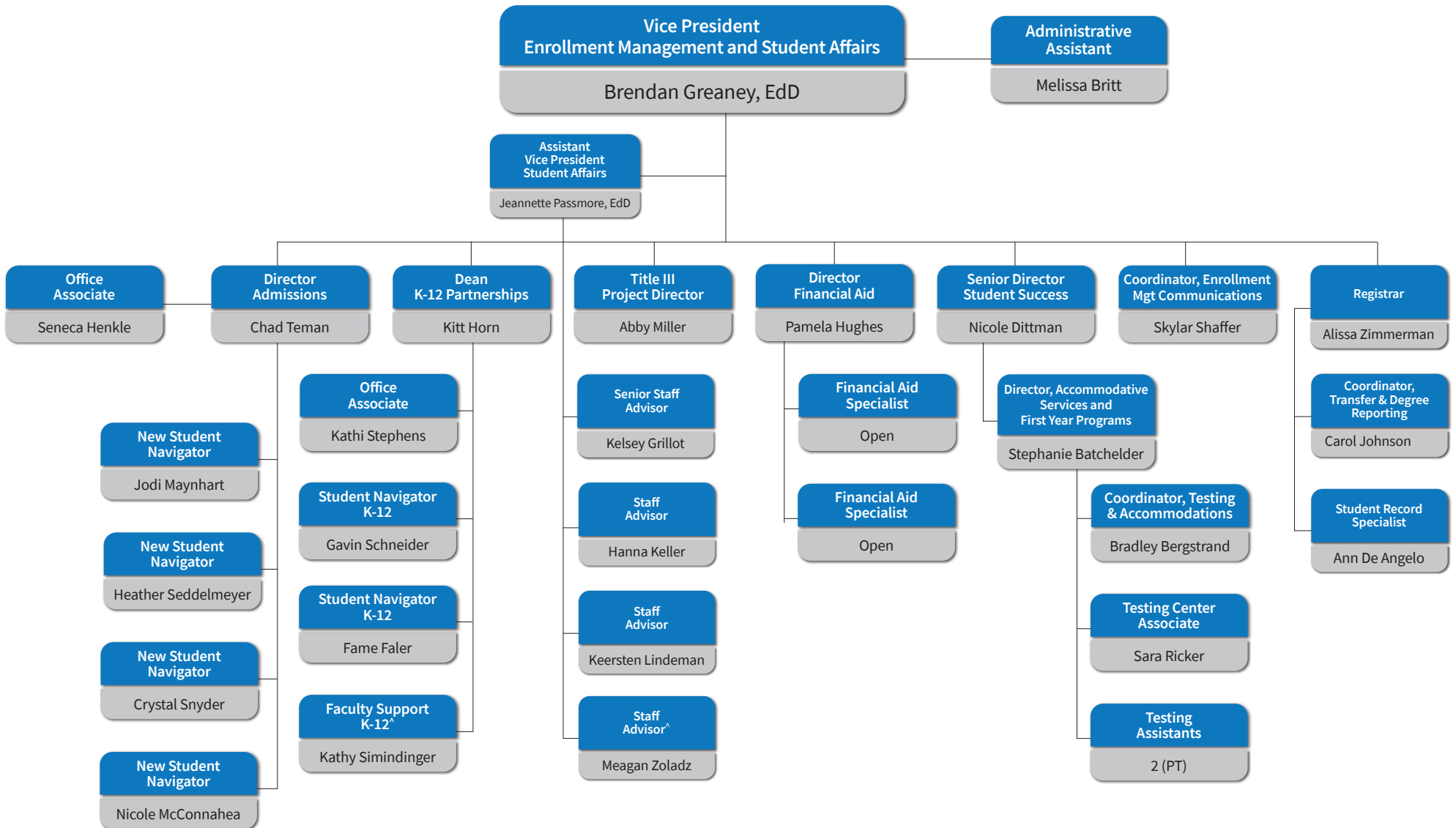


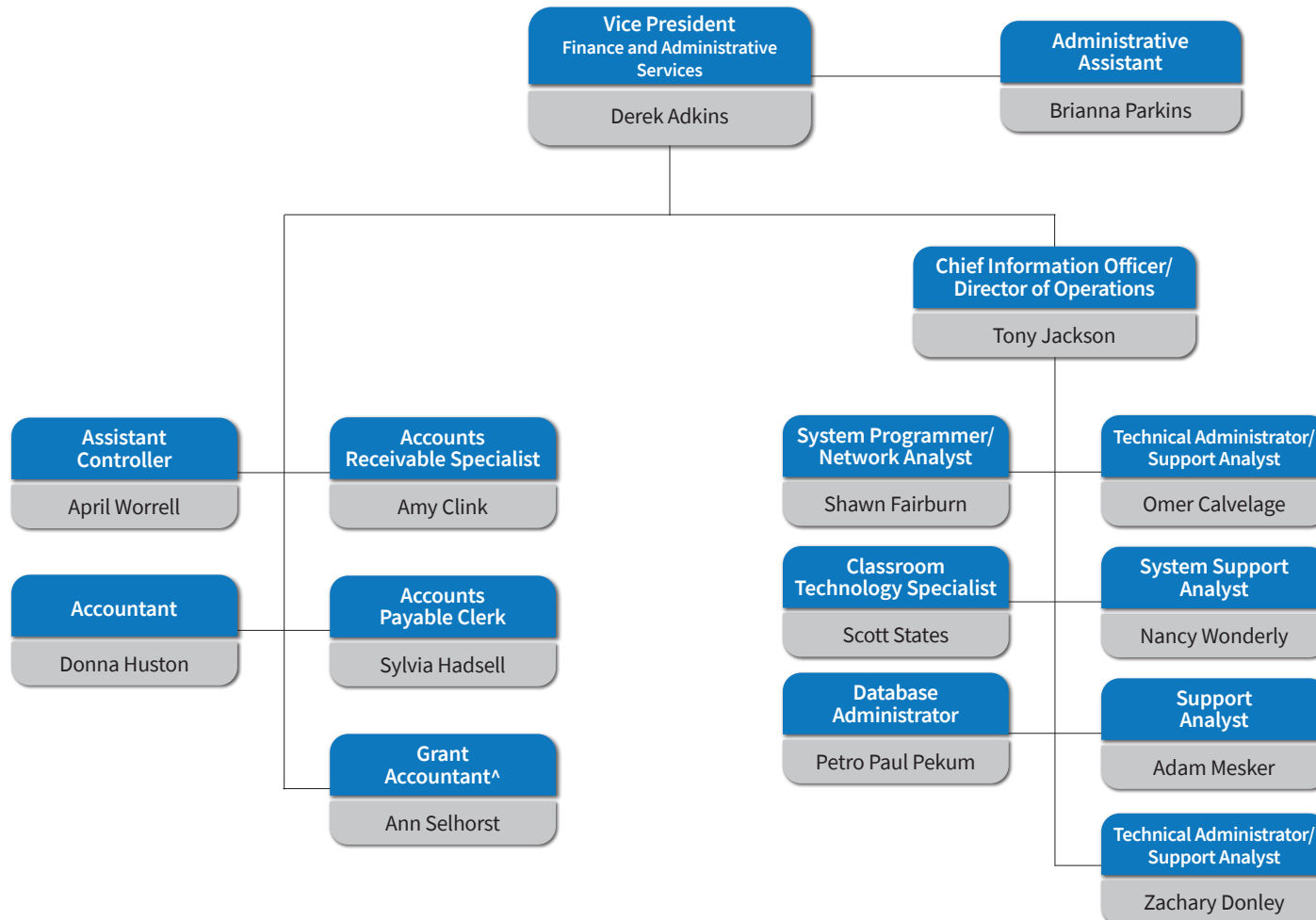
^ .5 FTE

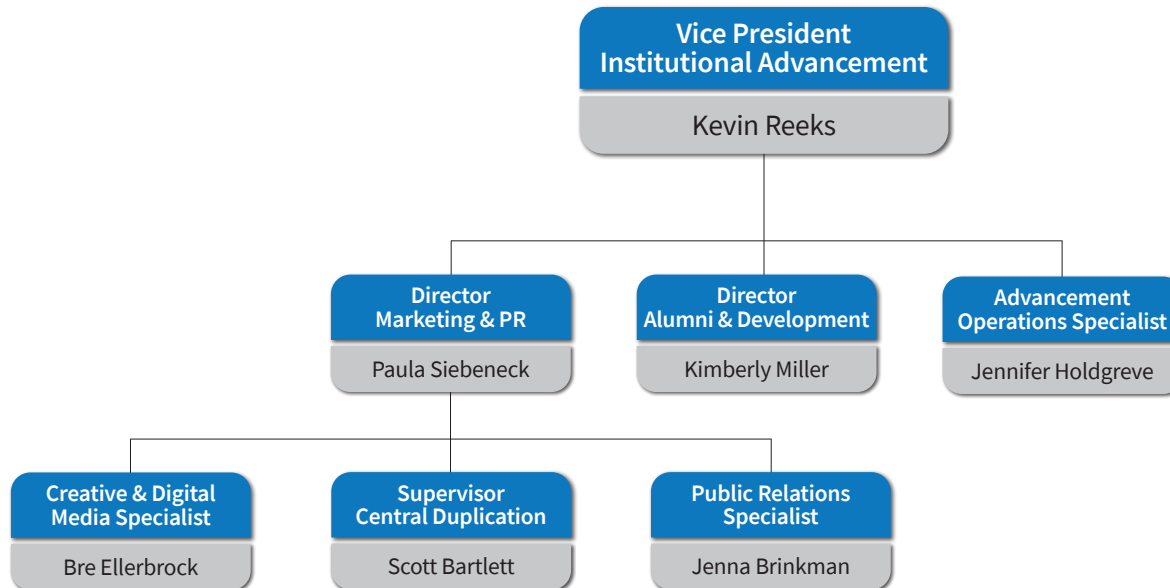
TECHNOLOGY AND LIBERAL STUDIES



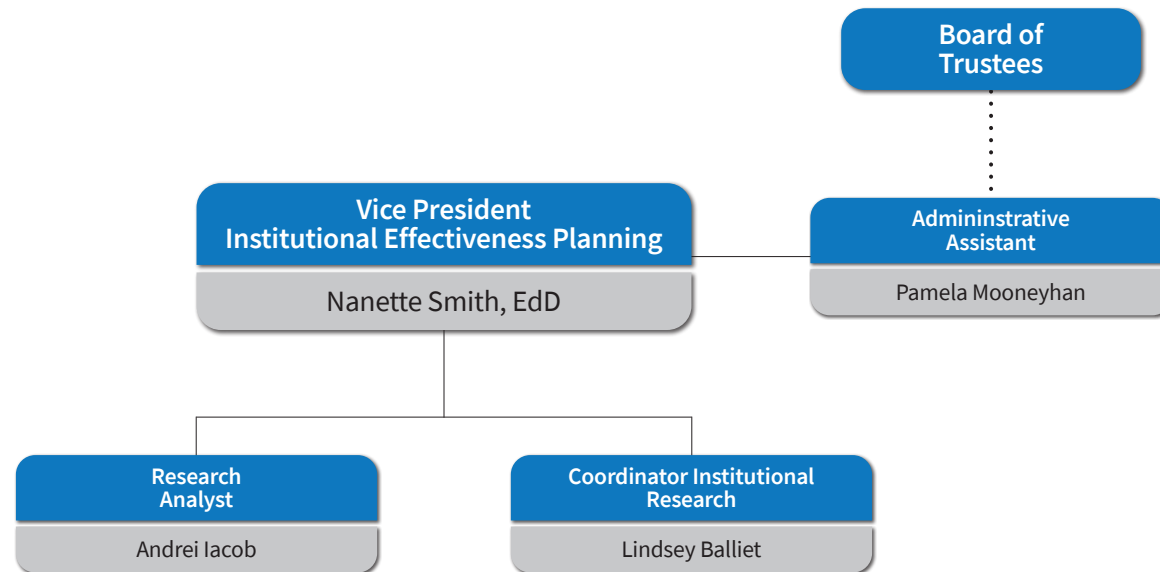
ENROLLMENT MANAGEMENT AND STUDENT AFFAIRS

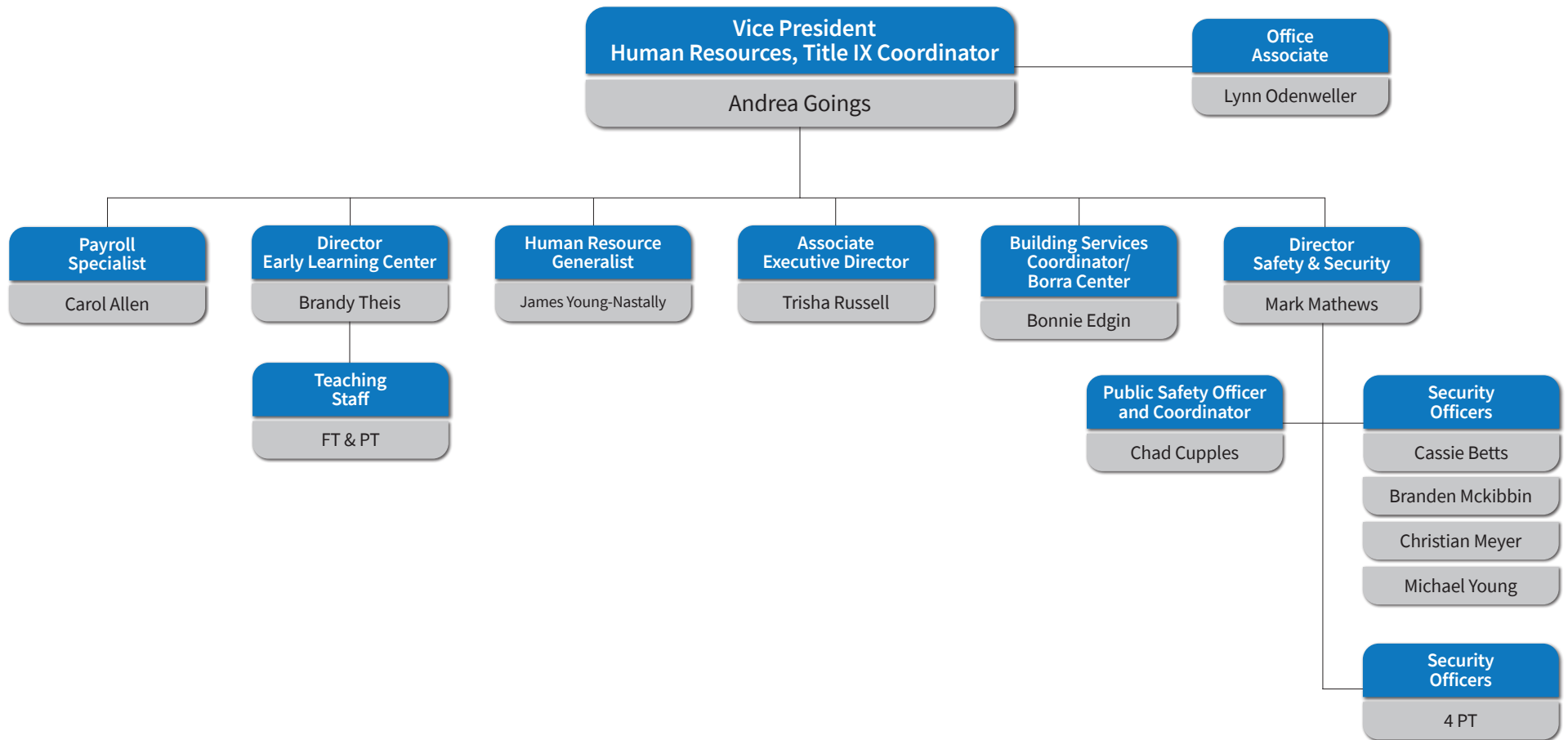


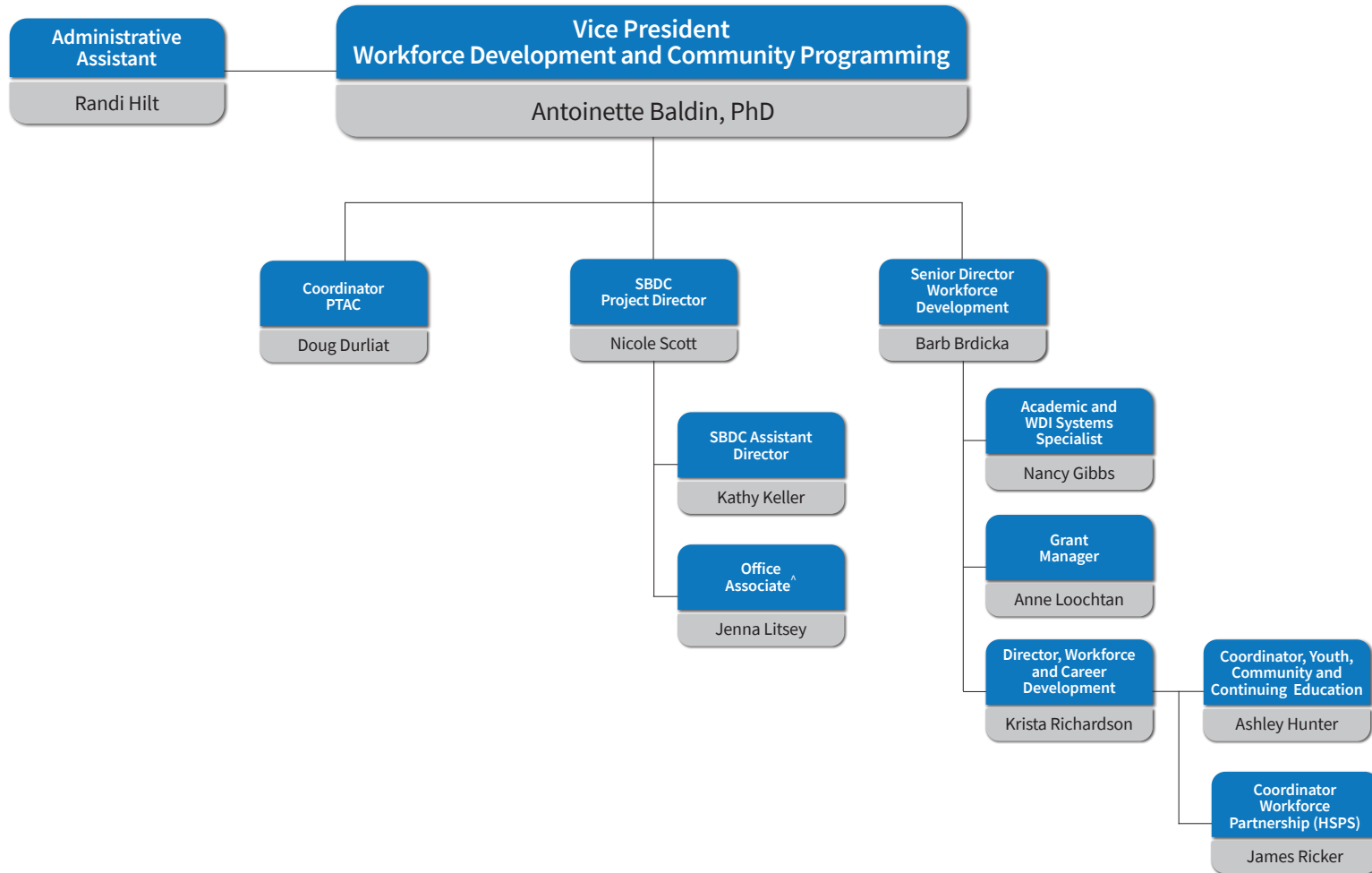




INSTITUTIONAL EFFECTIVENESS PLANNING







^ .5 FTE

* See detailed
Division organizational chart

